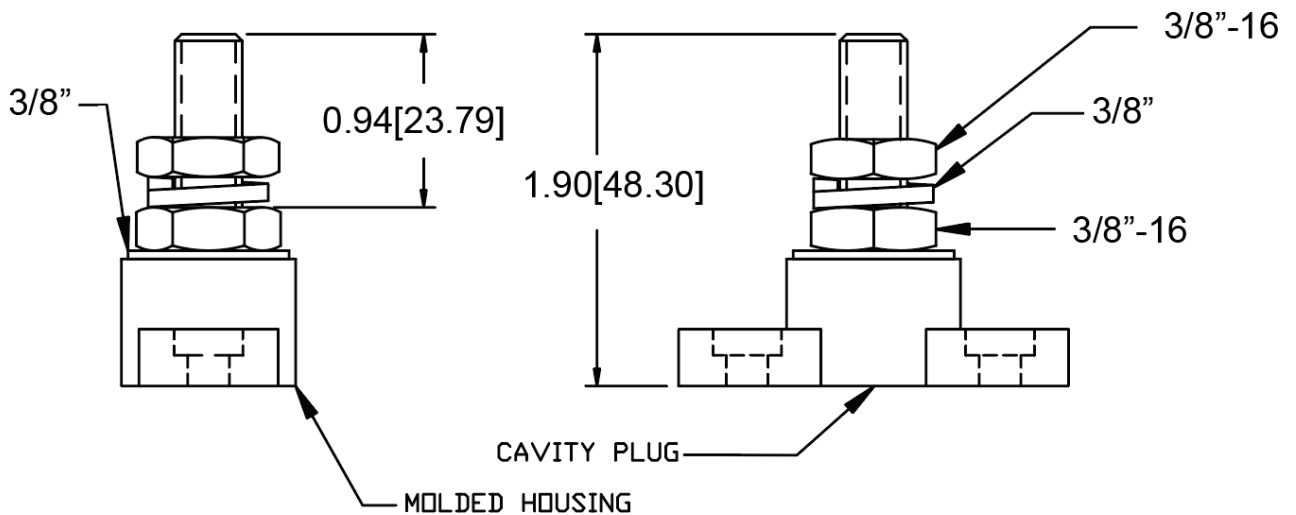
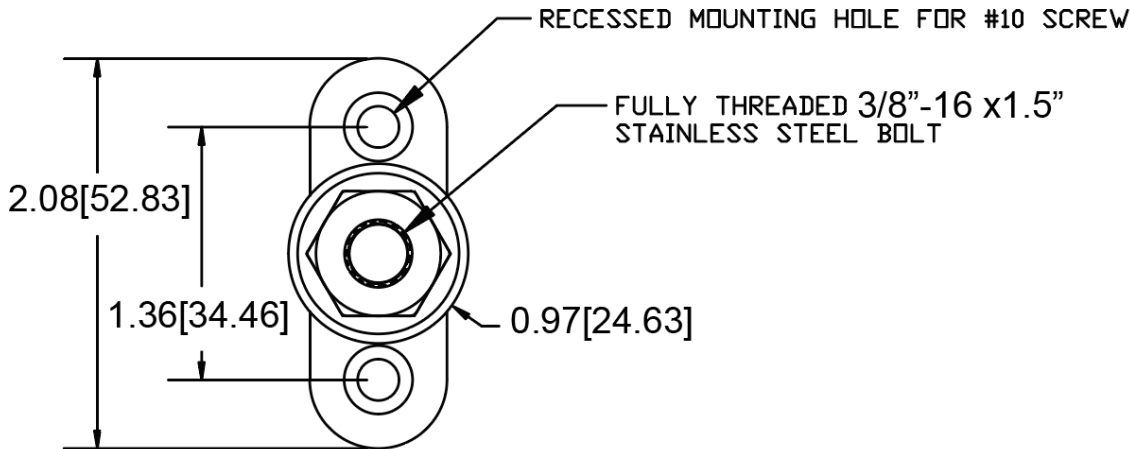


**Mechanical Dimensions: Inches [mm]**

Tolerances  $\pm 0.012$  [0.3] Unless Otherwise Specified



**Material Specifications**

<b>Molded Housing</b>	Red Glass Filled Nylon
<b>Melting Temperature</b>	515 °F
<b>Max. Overall Assembly Temperature</b>	140 °F
<b>Max. Torque</b>	12 ft/Lbs. (144 In/Lbs.)
<b>Specific Gravity</b>	1.23

<b>Bolt</b>	Stainless Steel
<b>Flat Washer</b>	Stainless Steel
<b>Heavy Hex Jam Nut (x2)</b>	Stainless Steel
<b>Lock Washer</b>	Stainless Steel

**Rev**    **Date of issue**    **Revision Notes**

**Designed**    **Approved**

A	07-27-2022	Initial Drawing	RC	OF
---	------------	-----------------	----	----